

Attachment B

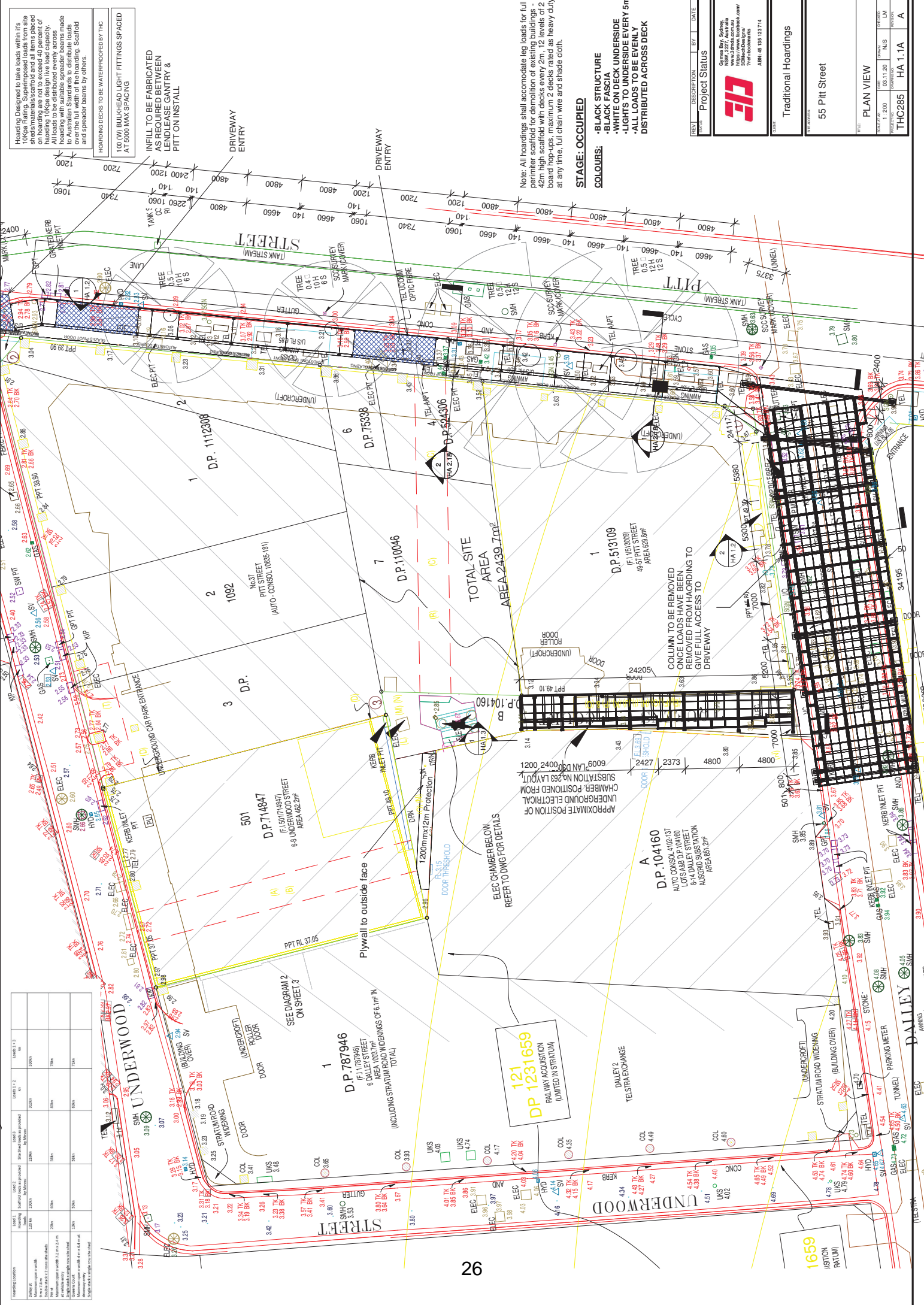
Selected Drawings

Hoarding Designed to take loads within its standards materials and all items placed on hoarding are not to exceed 40 percent of hoarding UoKa design live load capacity. Hoarding is to be erected on level ground and hoarding to be suitable for use as made to Australian Standards to distribute loads over the full width of the hoarding. Scaffold and spreader beams by others.

HOARDING DECKS TO BE WATERPROOFED BY THE
100 (W) BULKHEAD LIGHT FITTINGS SPACED
AT 5000 MAX SPACING

INELL TO BE FABRICATED
AS REQUIRED BETWEEN
LEAKAGE GUTTER &
PIT ON INSTALL

HOARDING CATEGORY	LOADS	HEIGHT	SPACING	WIND	WIND SPEED	WIND DIRECTION	WIND PERIOD	WIND EXPOSURE	WIND RISK	WIND CLASSIFICATION	WIND ZONE	WIND DIRECTION	WIND PERIOD	WIND EXPOSURE	WIND RISK	WIND CLASSIFICATION	WIND ZONE
Category 1	1.5	2.5m	500mm	150km/h	150km/h	150km/h	150km/h	150km/h	150km/h	150km/h	150km/h	150km/h	150km/h	150km/h	150km/h	150km/h	150km/h
Category 2	2.0	3.0m	500mm	200km/h	200km/h	200km/h	200km/h	200km/h	200km/h	200km/h	200km/h	200km/h	200km/h	200km/h	200km/h	200km/h	200km/h
Category 3	2.5	3.5m	500mm	250km/h	250km/h	250km/h	250km/h	250km/h	250km/h	250km/h	250km/h	250km/h	250km/h	250km/h	250km/h	250km/h	250km/h
Category 4	3.0	4.0m	500mm	300km/h	300km/h	300km/h	300km/h	300km/h	300km/h	300km/h	300km/h	300km/h	300km/h	300km/h	300km/h	300km/h	300km/h



Note: All hoardings shall accommodate leg loads for full perimeter scaffold for demolition of existing buildings - 42m high scaffold with decks every 2m, 12 levels of 2 board hop-ups, maximum 2 decks rated as heavy duty at any time, full chain wire and shade cloth.

STAGE OCCUPIED

COLOURS:

- BLACK STRUCTURE
- WHITE ON DECK UNDERSIDE
- LIGHTS TO UNDERSIDE EVERY 5m
- ALL LOADS TO BE EVENLY DISTRIBUTED ACROSS DECK

REV	DESCRIPTION	BY	DATE
1	Project Status		

3D Engineering & Design
15/151 Pitt Street
Sydney NSW 2000
www.3deng.com.au
3100 Collins Street
Melbourne VIC 3000
Tel: 03 9397 1111
Fax: 03 9397 1112
ABN: 60 135 127 114

Traditional Hoardings

55 Pitt Street

PLAN VIEW

SCALE: 1:200

DATE: 03.11.20

DRAWN BY: NUS

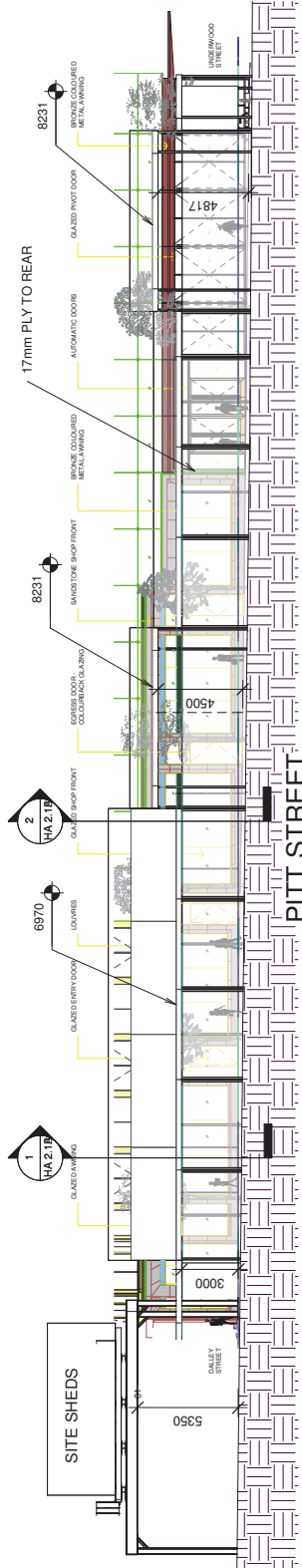
CHECKED BY: LM

TITLE: THC285 HA 1.1A

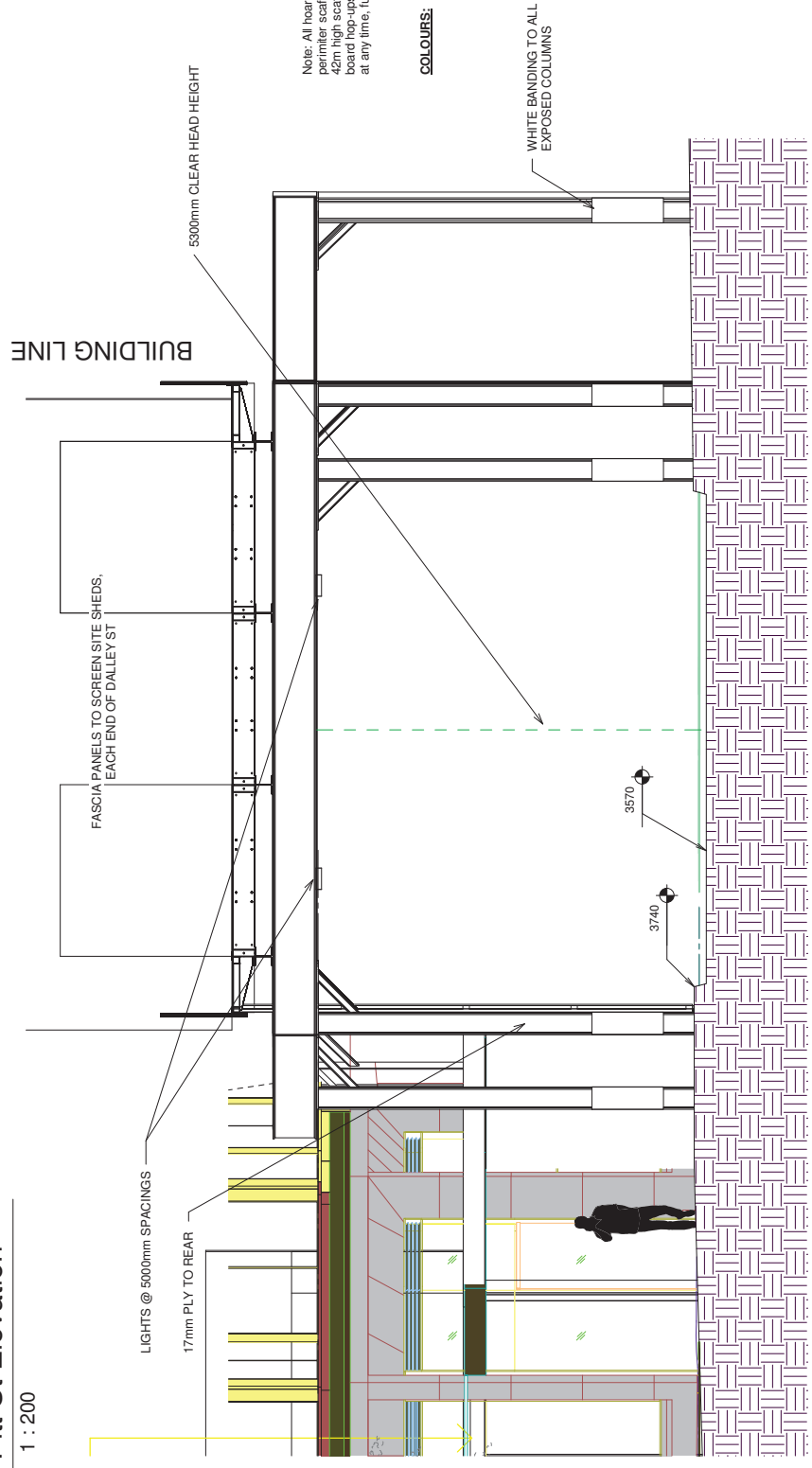
Hoarding Designed to take loads within it's shed materials/scaffolding and all items placed on hoarding are not to exceed 40 percent of hoarding 1.0kpa design live load capacity. Hoarding to be designed for any items placed on hoarding to be suitable for items made to Australian Standards to distribute loads over the full width of the hoarding. Scaffold and spreader beams by others.

HOARDING DECKS TO BE WATERPROOFED BY THC
 100 (W) BULKHEAD LIGHT FITTINGS SPACED AT 5000 MAX SPACING

HOARDING CATEGORY	LOAD 1	LOAD 2	LOAD 3	LOAD 1 & 2	LOAD 1 & 3
Category 1	Hoarding	Surface loads (as provided)	Site (as shown as provided)	120kPa	300kPa
Category 2	Hoarding	Surface loads (as provided)	Site (as shown as provided)	120kPa	300kPa
Category 3	Hoarding	Surface loads (as provided)	Site (as shown as provided)	120kPa	300kPa
Category 4	Hoarding	Surface loads (as provided)	Site (as shown as provided)	120kPa	300kPa
Category 5	Hoarding	Surface loads (as provided)	Site (as shown as provided)	120kPa	300kPa



1 Pitt St Elevation
 1 : 200



2 Section 3
 1 : 50

Note: All hoardings shall accommodate leg loads for full perimeter scaffold for demolition of existing buildings - 42m high scaffold with decks every 2m, 12 levels of 2 board hop-ups, maximum 2 decks rated as heavy duty at any time, full chain wire and shade cloth.

- COLOURS:
- BLACK STRUCTURE
 - BLACK FASCIA
 - WHITE ON DECK UNDERSIDE
 - LIGHTS TO UNDERSIDE EVERY 5m
 - ALL LOADS TO BE EVENLY DISTRIBUTED ACROSS DECK

REV	DESCRIPTION	BY	DATE
Project Status			
EBC 15/157 Pitt Street Sydney, NSW 2027, Australia www.ebc.com.au 2344 Pitt Street Sydney, NSW 2027, Australia Tel: 61 2 9333 1111 ABRN: 60 135 123714			

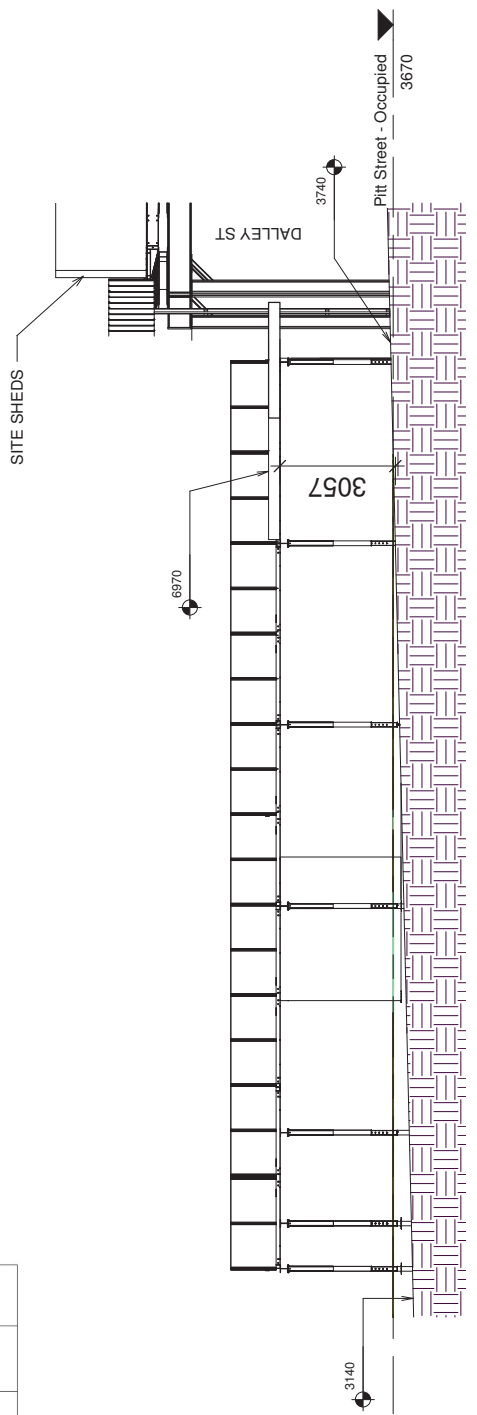
Traditional Hoardings
 55 Pitt Street

Pitt St Elevation			
SCALE	DATE	DRAWN	CHECKED
As Indicated	03.11.20	NUS	LM
PROJECT NO.	DESCRIPTION	DATE	REVISION
THC285	HA 1.2		A

HOARDING LOCATION	LOAD 1 Hoarding 120 kPa	LOAD 2 Surface loads as provided 150 kPa	LOAD 3 Site shed loads as provided 150 kPa	LOADS 1, 2 M	LOADS 1, 3 M
200kg/m ² on 4.4m x 4.4m mesh	20kPa	150kPa	150kPa	32.00m	32.00m
200kg/m ² on 2.2 x 3.3m mesh	20kPa	150kPa	150kPa	32.00m	32.00m
Maximum span width 7.2m x 3.3m	20kPa	150kPa	150kPa	32.00m	32.00m
Maximum span width 4.4m x 4.4m	20kPa	150kPa	150kPa	32.00m	32.00m
Maximum span width 4.4m x 4.4m	20kPa	150kPa	150kPa	32.00m	32.00m
Maximum span width 4.4m x 4.4m	20kPa	150kPa	150kPa	32.00m	32.00m
Maximum span width 4.4m x 4.4m	20kPa	150kPa	150kPa	32.00m	32.00m
Maximum span width 4.4m x 4.4m	20kPa	150kPa	150kPa	32.00m	32.00m

Hoarding Designed to take loads within it's shed materials/scaffold and all items placed on hoarding are not to exceed 40 percent of hoarding 1.0kpa design live load capacity. All loads to be applied over the entire area of hoarding to be suitable for the loads made to Australian Standards to distribute loads over the full width of the hoarding. Scaffold and spreader beams by others.

HOARDING DISCS TO BE WATERPROOFED BY THE
100 (W) BULKHEAD LIGHT FITTINGS SPACED AT 5000 MAX SPACING



Queens Court Elevation

1
1 : 100

Note: All hoardings shall accommodate leg loads for full perimeter scaffold for demolition of existing buildings - 42m high scaffold with decks every 2m, 12 levels of 2 board hop-ups, maximum 2 decks rated as heavy duty at any time, full chain wire and shade cloth.

- COLOURS:**
- BLACK STRUCTURE
 - BLACK FASCIA
 - WHITE ON DECK UNDERSIDE
 - LIGHTS TO UNDERSIDE EVERY 5m
 - ALL LOADS TO BE EVENLY DISTRIBUTED ACROSS DECK

REV	DESCRIPTION	BY	DATE
Project Status			
Traditional Hoardings			
55 Pitt Street			
Queens Court Elevation			
SCALE	DATE	DESIGNED	CHECKED
1 : 100	03.11.20	NUS	Checker
PROJECT NO.	DRAWING NO.	REVISION	FIGURE NO.
THC285	HA 1.3		A

